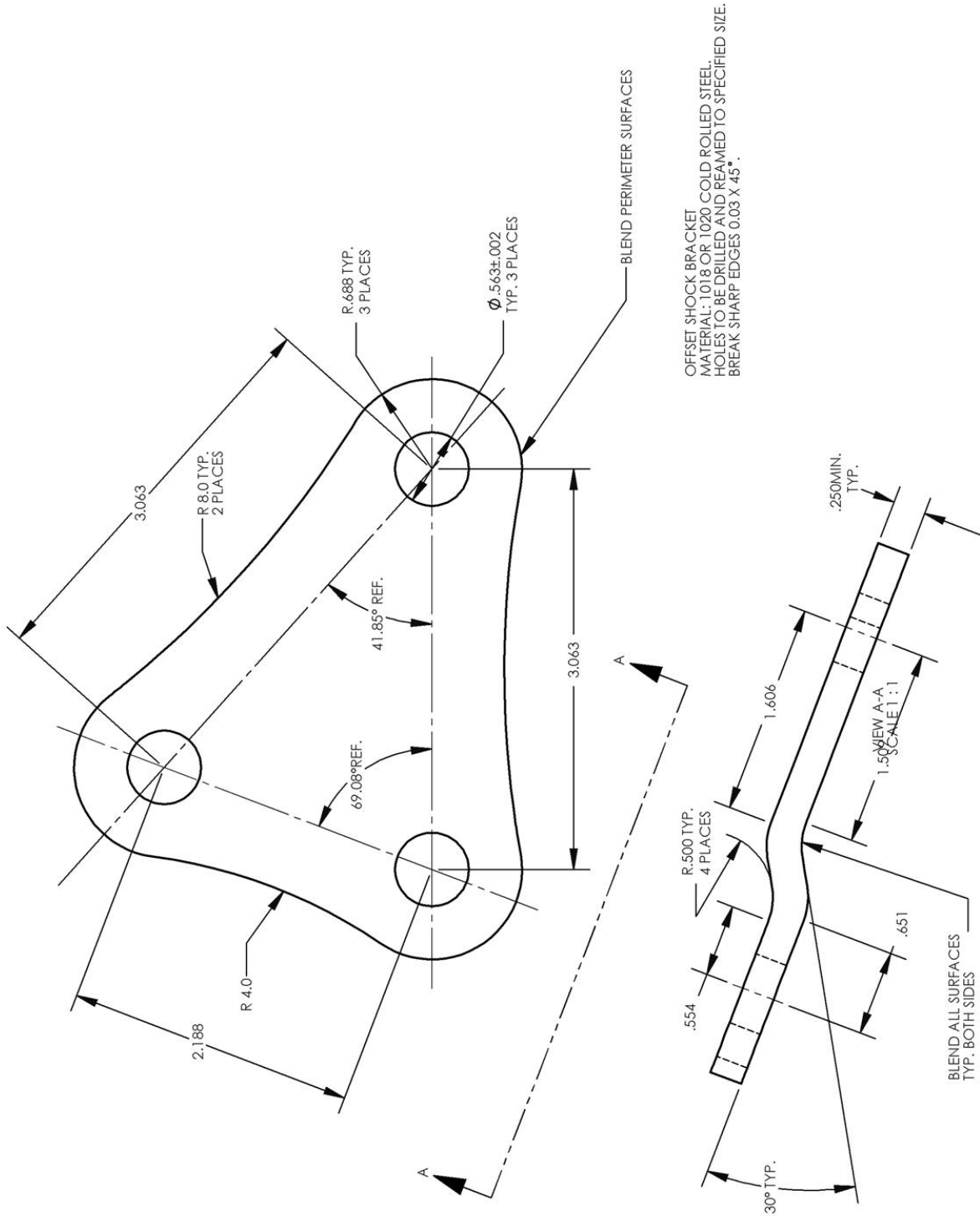
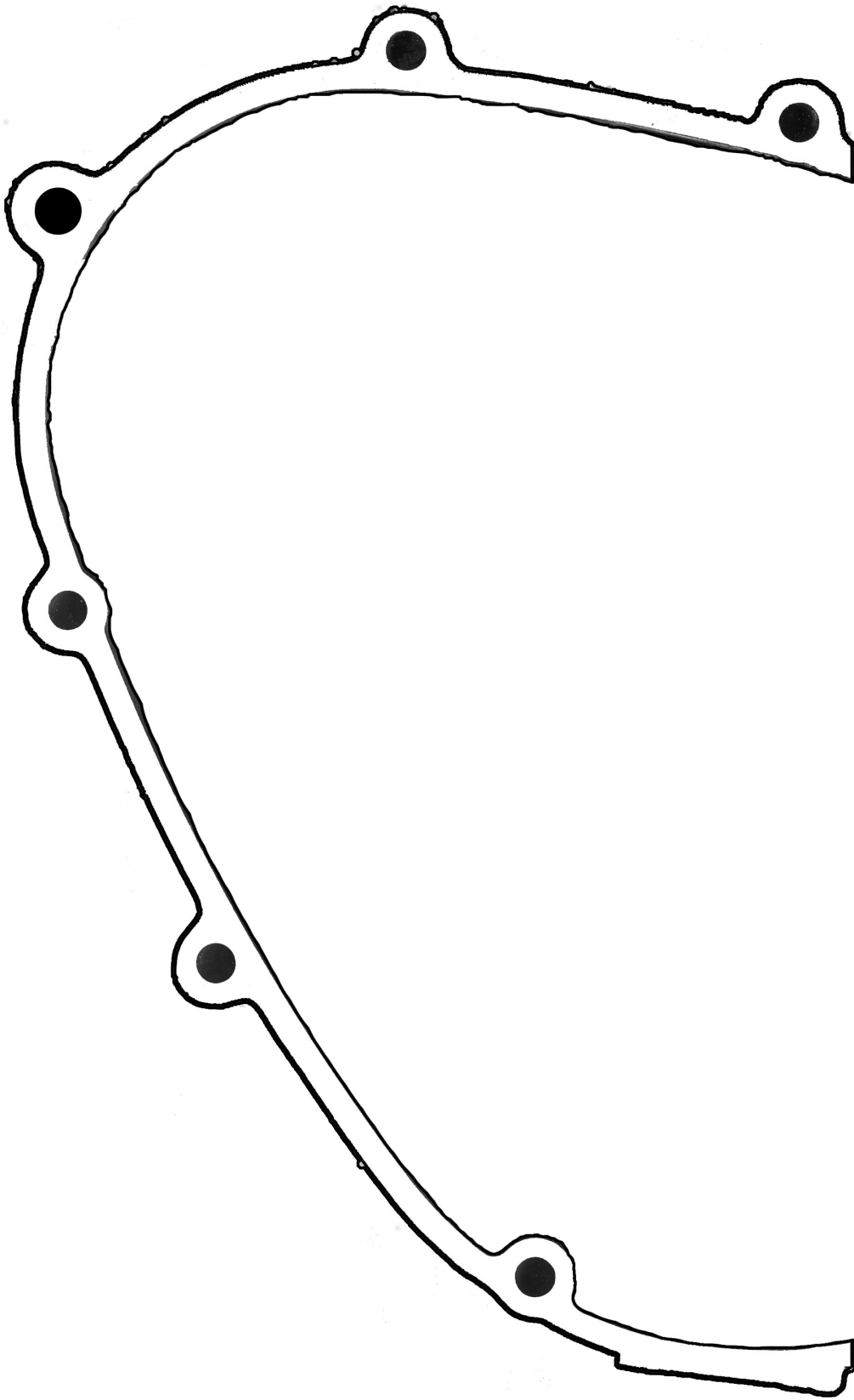


2" Dropped Shackles
Flat Stock

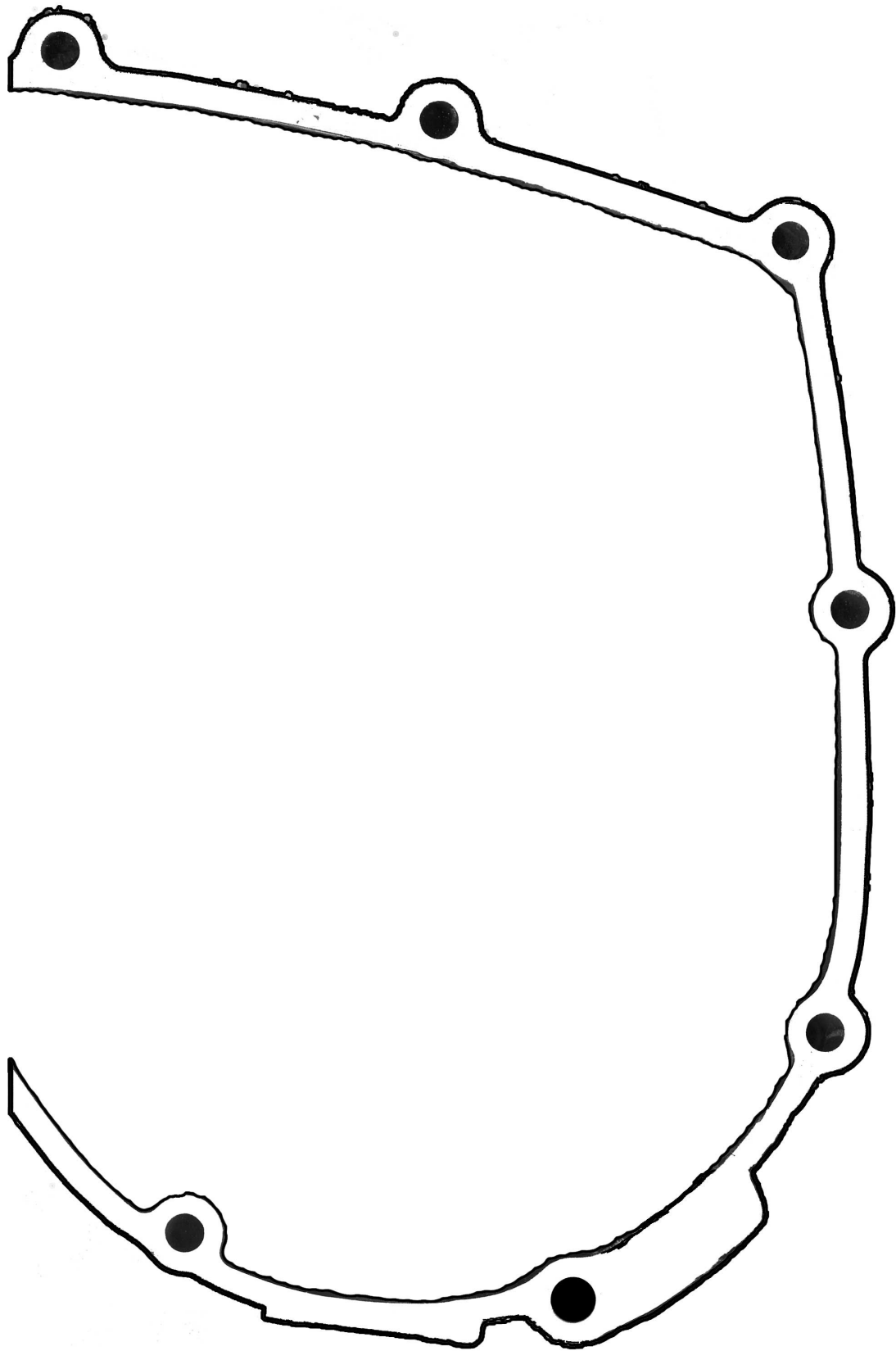
FLAT SHOCK BRACKET
 MATERIAL: 1018 OR 1020 COLD ROLLED STEEL.
 THICKNESS: 0.250" MINIMUM.
 HOLES TO BE DRILLED AND REAMED TO SPECIFIED SIZE.
 BREAK SHARP EDGES 0.03 X 45°.

2" Dropped Shackle Offset Lowering Plate

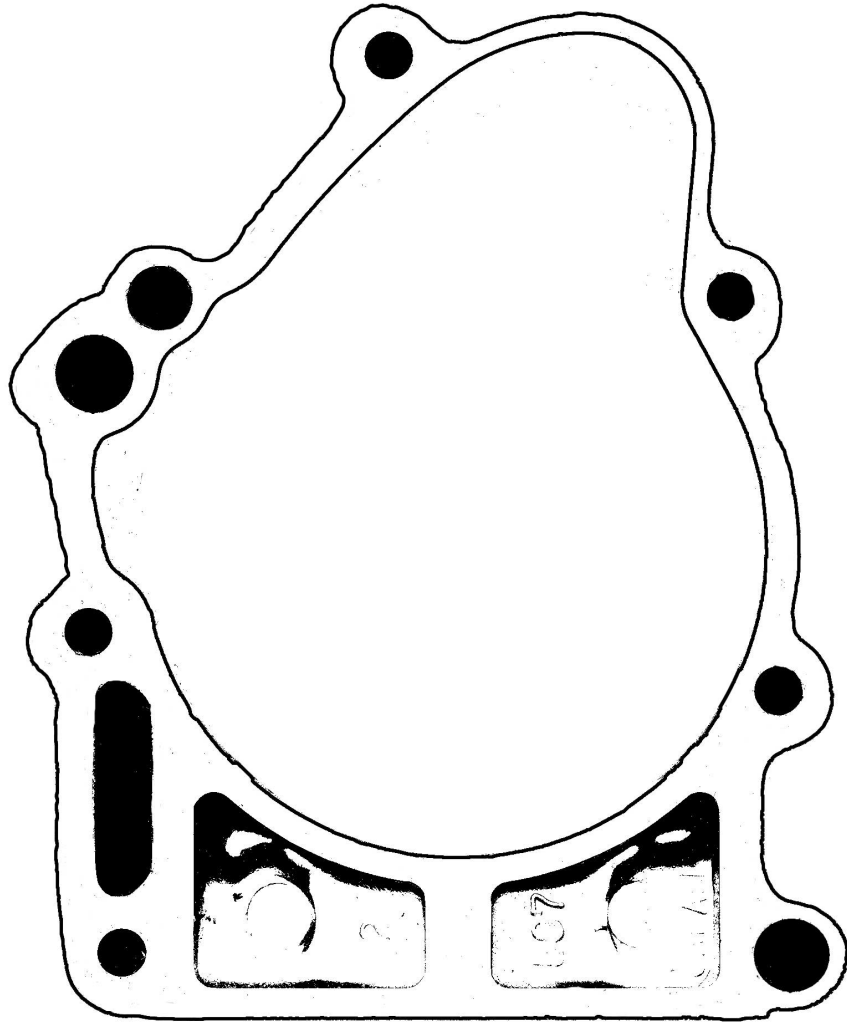


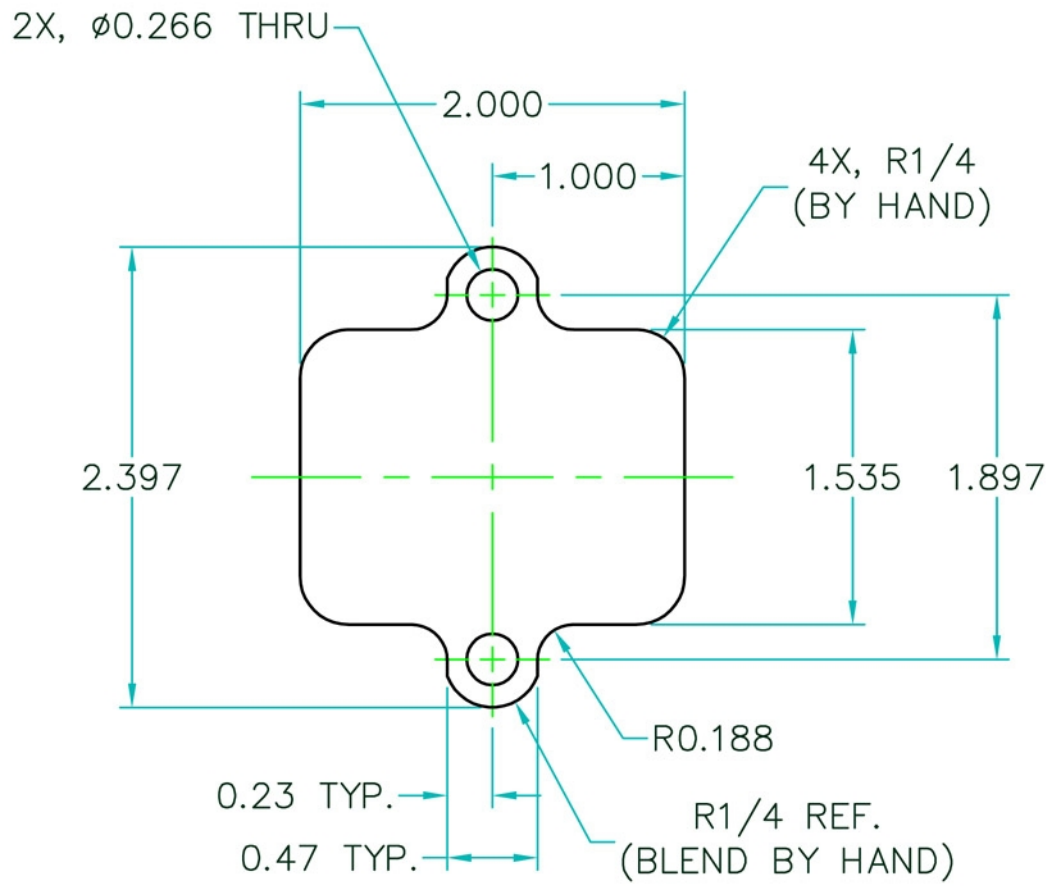


Side Cover 1

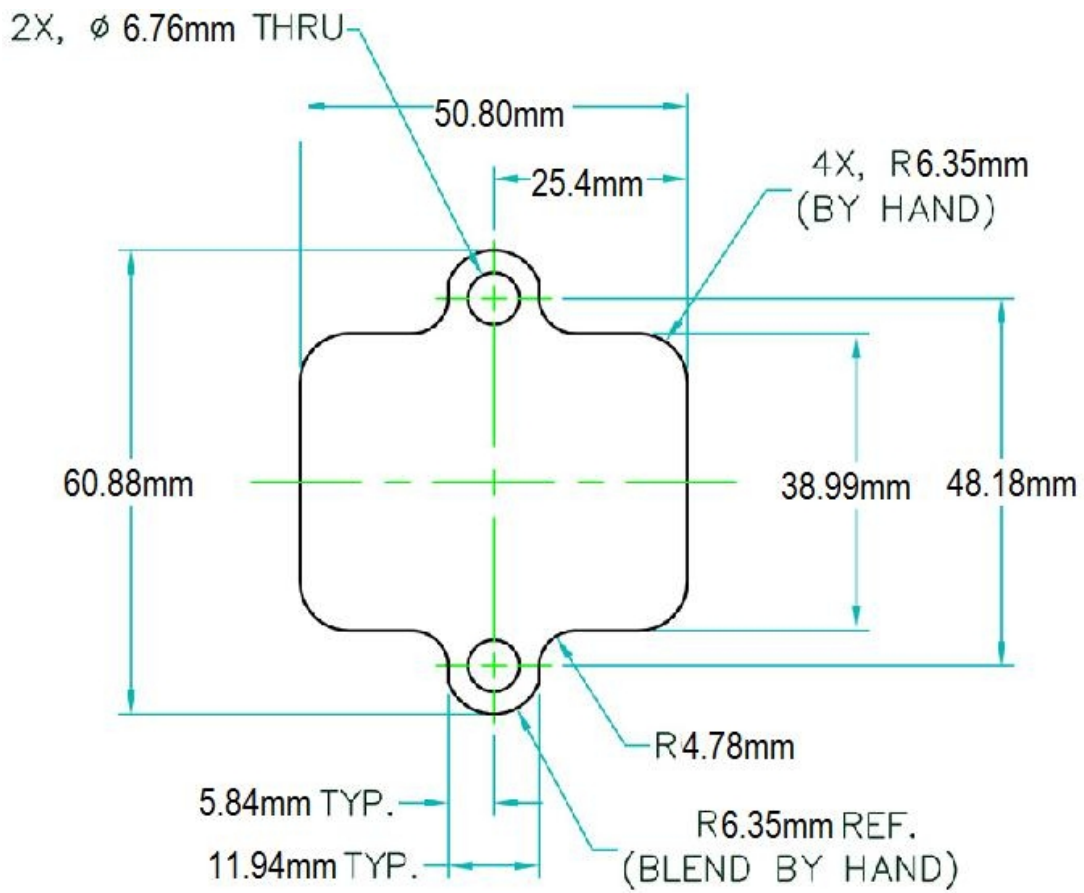


Side Cover 2





Read Cover Pattern SAE



Reed Valve Cover Metric

65 @ 7500 per Mama Kaw
52 per an individual test

Torque ft-lbs @ RPM
47.7 @ 6500

1/4 mile seconds @ MPH
13.70 @ 97.6

0 to 60 in seconds - we don't know at this time

Top Speed in MPH - we don't know for sure

NOTE: Additional performance info provided by FARRIS on 5/28/04:

[A] = 1/4 MILE, SECONDS / MPH. [B] = 0-60 MPH, SEC. [C] = 40-60 / 60-80
RUN-ON, SEC.

[D] = 200 YARD TOP GEAR ACCELERATION FROM 50, TERMINAL MPH.

'VULCAN VN750', 750, '86 TO NOW [A] 12.91 / 102.7 [B] 4.40 [C] 4.50 / 5.10
[D] 72.7

SOURCES FOR ABOVE : 'CYCLE' [MARCH, 1986], AND 'CYCLE WORLD' [AUGUST,
1988], MAGAZINES.

ENGINE 749cc, Liquid cooled, 4-stroke, V-twin, 8-valves, DOHC, rubber mounted
DISPLACEMENT 749cc
BORE X STROKE 84.9 x 66.2mm
COMPRESSION RATIO 10.3:1
FUEL CAPACITY 3.6 gal.
FINAL DRIVE Shaft
CARBURETION Keihin CVK34 x 2
IGNITION Electronic
TRANSMISSION 5-Speed
FRAME Double cradle, high tensile steel
RAKE/TRAIL: 32 degrees/5.0 in.
LENGTH 90.4"
WIDTH 33.5"
HEIGHT 48.2"
WHEELBASE 62.2"
GROUND CLEARANCE 5.9"
SEAT HEIGHT 28.9"
DRY WEIGHT 483 lbs.
BRAKES / WHEELS / TIRES
SUSPENSION Front: Hydraulic telescopic fork 5.9 in. travel
Rear: Air assisted dual shocks with, 4-way rebound damping 3.5 in. travel
BRAKES Front: Dual Discs
Rear: Mechanical Drum
TIRES Front: 100/90-19
Rear: 150/90-15

Oil Filters

AC PF2135, PF2057, L14622, L14459

Amsoil SMF103 Amsoil dealers about \$8.00 Traps and holds more dirt than a conventional paper filter. Filter is painted black.

Bosch 3300 or 3323 Auto Zone 5.49

Emgo HC04 (for '95 on up). (HC03 for older) <http://www.crc2onlinecatalog.com/>
6.95 ea. 5.95 ea X 10

FRAM PH6017A Oil Filter Kragen Auto Stores \$5, look for \$3 Coupon FRAM is not recommended. Use ST6607 from Wal Mart!!!!

Fram 6017 Fleet Farm \$4.79

Hastings LF402

K and N 202 Various online locations and Kaw dealers Appx \$12.00 03 and up is a K&N303 and for Chome it is a K&N303C

Mobil 1 M1-110

Motorcraft FL822

NAPA 1356 NAPA The 1358 is shorter, smaller capacity and costs \$9.69

STP S-02867, S-02876, or SMO-010A Auto Zone sometimes The SMO-010A I saw was white :(

SuperTech 2000 ST2808 or ST6607 WalMart 1.97

Wix 51334 or 51356

VN750 Maintenance Schedule

	Mileage	500	3,000	6,000	9,000	12,000	15,000	18,000	21,000	24,000
	Mileage									
	Date									
†	Carburetor synchronization – check	↑	↑	↑	↑	↑	↑	↑	↑	↑
†	Idle speed – check	↑	↑	↑	↑	↑	↑	↑	↑	↑
†	Throttle grip play – check	↑		↑		↑		↑		↑
†	Spark plug – clean and gap		↑	↑	↑	↑	↑	↑	↑	↑
†	Air suction valve – check		↑	↑	↑	↑	↑	↑	↑	↑
	Air cleaner element – clean	↑		↑		↑		↑		↑
	Air cleaner element – replace					↑				↑
	Fuel system – check			↑		↑		↑		↑
†	Battery electrolyte level – check	↑	↑	↑	↑	↑	↑	↑	↑	↑
†	Break play – check	↑	↑	↑	↑	↑	↑	↑	↑	↑
†	Break light switch – check	↑	↑	↑	↑	↑	↑	↑	↑	↑
†	Break lining or pad wear – check		↑	↑	↑	↑	↑	↑	↑	↑
†	Break fluid level – check	↑	↑	↑	↑	↑	↑	↑	↑	↑
K †	Break fluid – change					↑				↑
	Clutch – adjust	↑	↑	↑	↑	↑	↑	↑	↑	↑
K †	Steering – check	↑	↑	↑	↑	↑	↑	↑	↑	↑
†	Final gear case oil level – check			↑		↑		↑		↑
	Final gear case oil – change	↑						↑		
K	Propeller shaft joint – lubricate			↑				↑		
†	Nut, bolt, and fastener tightness – check	↑		↑		↑		↑		↑
†	Tire wear – check		↑	↑	↑	↑	↑	↑	↑	↑
	Engine oil – change	↑	↑	↑	↑	↑	↑	↑	↑	↑
	Oil Filter – replace	↑	↑	↑	↑	↑	↑	↑	↑	↑
	Oil Screen – clean	↑	↑	↑		↑		↑		↑
	General lubrication – perform		↑	↑	↑	↑	↑	↑	↑	↑
K	Front fork oil – change							↑		
K	Swingarm pivot – lubricate			↑				↑		
K	Break camshaft – lubricate					↑				↑
K	Coolant – change							↑		
†	Radiator hoses, connections – check	↑		↑		↑		↑		↑
K	Steering stem bearing – lubricate					↑				↑
K †	Break hoses, connections – check		↑	↑	↑	↑	↑	↑	↑	↑
K †	Fuel hoses, connections – check		↑	↑	↑	↑	↑	↑	↑	↑

	Annual / Special	2003	2004	2005	2006	2007	2008
	Air cleaner element – replace	5					

K -- Should be done by a Kawasaki Dealer

† -- Replace, add, adjust, or torque if necessary

VN750 Maintenance Schedule

		<i>Cleanin gs</i>						
K	Break fluid – change	2 Years		↑		↑		↑
	Engine oil – change	Yearly	↑	↑	↑	↑	↑	↑
K	Break camshaft – lubricate	2 Years		↑		↑		↑
K	Coolant – change	2 Years		↑		↑		↑
†	Radiator hoses, connections – check	Yearly	↑	↑	↑	↑	↑	↑
K	Steering stem bearing – lubricate	2 Years		↑		↑		↑
K	Master cylinder cup and dust seal – replace	2 Years		↑		↑		↑
K	Caliper piston seal and dust seal – replace	2 Years		↑		↑		↑
K	Break cable – replace	2 Years		↑		↑		↑
K	Break hose – replace	4 Years				↑		
K	Fuel hose – replace	4 Years				↑		

K -- Should be done by a Kawasaki Dealer

† -- Replace, add, adjust, or torque if necessary

VN750 Maintenance Schedule

2002										7	8	9	10	11	12
†	Battery electrolyte level – check	Month ly								↑	↑	↑	↑	↑	↑
†	Break fluid level – check	Month ly								↑	↑	↑	↑	↑	↑

2003			1	2	3	4	5	6	7	8	9	10	11	12
†	Battery electrolyte level – check	Month ly	↑	↑	↑	↑	↑	↑	↑	↑	↑	↑	↑	↑
†	Break fluid level – check	Month ly	↑	↑	↑	↑	↑	↑	↑	↑	↑	↑	↑	↑

2004			1	2	3	4	5	6	7	8	9	10	11	12
†	Battery electrolyte level – check	Month ly	↑	↑	↑	↑	↑	↑	↑	↑	↑	↑	↑	↑
†	Break fluid level – check	Month ly	↑	↑	↑	↑	↑	↑	↑	↑	↑	↑	↑	↑

2005			1	2	3	4	5	6	7	8	9	10	11	12
†	Battery electrolyte level – check	Month ly	↑	↑	↑	↑	↑	↑	↑	↑	↑	↑	↑	↑
†	Break fluid level – check	Month ly	↑	↑	↑	↑	↑	↑	↑	↑	↑	↑	↑	↑

2006			1	2	3	4	5	6	7	8	9	10	11	12
†	Battery electrolyte level – check	Month ly	↑	↑	↑	↑	↑	↑	↑	↑	↑	↑	↑	↑
†	Break fluid level – check	Month ly	↑	↑	↑	↑	↑	↑	↑	↑	↑	↑	↑	↑

2007			1	2	3	4	5	6	7	8	9	10	11	12
†	Battery electrolyte level – check	Month ly	↑	↑	↑	↑	↑	↑	↑	↑	↑	↑	↑	↑
†	Break fluid level – check	Month ly	↑	↑	↑	↑	↑	↑	↑	↑	↑	↑	↑	↑

Idle 1,050 - 1,150
 Spark Plug NGK DP7EA-9 ND X22EP-U9
 Gap .8 - .9 mm. (.032 - .036 in.)
 Torque 10 ft-lb
 Break Fluid D.O.T. 4
 Final Gear Oil API “GL-5” Hypoid Gear Oil SAE 90 (80 if below 41°F)
 .16 Qt. (150 ml.) Torque: 14.5 ft-lbs
 Front Tire 28 PSI. 1 mm. of tread 100/90-19-57H-4PR Tubeless
 Bridgestone L309 Dunlop F11A

K -- Should be done by a Kawasaki Dealer

† -- Replace, add, adjust, or torque if necessary

VN750 Maintenance Schedule

Rear Tire 28 - 32 PSI. 2 mm. of tread 150/90-15-74H Tubeless
Bridgestone G526 Dunlop K425
Oil SAE 20W50 API SE, SF, or SG or API SI or SJ with JASPO MA
Filter Kawasaki 16097-1066
Torque 11 - 14.5 ft-lb (Filter and Drain Plug)
Coolant 50% mix Ethylene Glycol based Antifreeze and Distilled Water
1.6 qt. Torque: Engine Drain Plug: 78 in-lbs Radiator Drain Plug: 26 in-lbs
Fork: SAE 5W20 oil (368.5-373.5 cc dry) Drain Plug Torque: 69 in-lbs (5.7 ft-lbs)

Bulbs:

Headlight: 12V 60/55W H4 (9003)	Rear Turn: 12V 23W (32CP)
Taillight: 12V 21/5W (1157)	Front Turn: 12V 23/8W (32/3CP)
License: 12V 5W	

Motorcycle Oil Filters (~ 2.5 to 3 inches long)

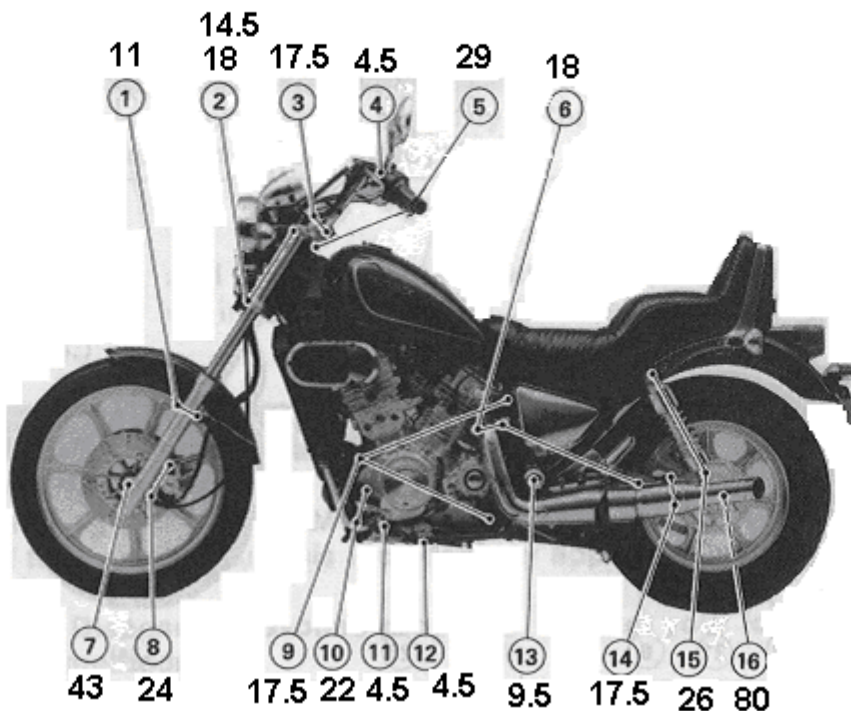
Purolator Motorcycle ML16817 ~\$6.00	AC Delco PF2135 ~\$10
NAPA Gold 1358 / Carquest 85358, WIX 51358 ~\$7-\$8	FRAM PH6017A ~\$7

VN750 Maintenance

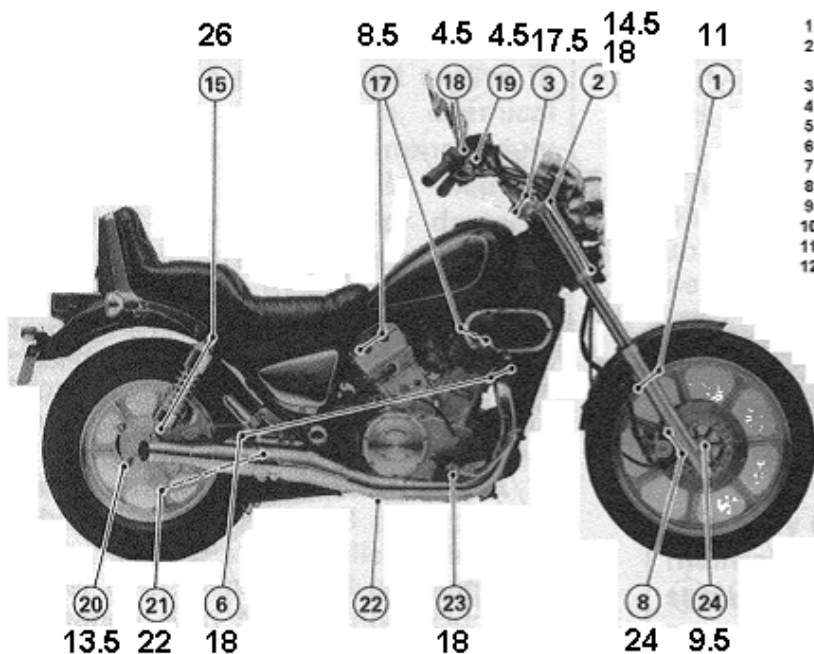
Bolt and Nut Tightening

In accordance with the Periodic Maintenance Chart, it is very important to check the tightness of the bolts and nuts listed here. Also, check to see that each cotter pin is in place and in good condition. Please ask your authorized Kawasaki dealer for torque values.

1. Front Fender Mounting Bolts
2. Front Fork Clamp Bolts
3. Handlebar Mounting Bolts
4. Clutch Lever Pivot Bolt
5. Stem Head Bolt
6. Muffler Mounting Bolts and Nuts
7. Front Axle Nut
8. Caliper Mounting Bolts
9. Engine Mounting Bolts and Nuts
10. Footpeg Mounting Bracket Bolts
11. Shift Pedal Bolt
12. Side Stand Bolt
13. Pivot Shaft Nut
14. Final Gear Case Mounting Nuts
15. Rear Shock Absorber Mounting Nuts
16. Rear Axle Nut



11 14.5 18 17.5 4.5 29 18
 1 2 3 4 5 6
 7 8 43 24
 9 10 11 12 17.5 22 4.5 4.5 9.5 13 14 15 16
 17.5 26 80



26 8.5 4.5 4.5 17.5 14.5 11
 15 17 18 19 3 2 1
 20 21 6 22 23 8 24
 13.5 22 18 18 24 9.5

- | | |
|-------------------|----------------|
| 1 11 ft-lbs | 13 9.6 ft-lbs |
| 2 14.5 ft-lbs top | 14 17.5 ft-lbs |
| 18 ft-lbs bottom | 15 26 ft-lbs |
| 3 17.5 ft-lbs | 16 80 ft-lbs |
| 4 4.5 ft-lbs | 17 8.5 ft-lbs |
| 5 29 ft-lbs | 18 4.5 ft-lbs |
| 6 18 ft-lbs | 19 4.5 ft-lbs |
| 7 43 ft-lbs | 20 13.5 ft-lbs |
| 8 24 ft-lbs | 21 22 ft-lbs |
| 9 17.5 ft-lbs | 22 |
| 10 22 ft-lbs | 23 18 ft-lbs |
| 11 4.5 ft-lbs | 24 9.5 ft-lbs |
| 12 4.5 ft-lbs | |

17. Cylinder Head Bolts
18. Brake Master Cylinder Clamp Bolts
19. Brake Lever Pivot Bolt
20. Brake Cam Lever Bolt
21. Torque Link Nuts
22. Muffler Connecting Pipe Clamp Bolts
23. Brake Pedal Bolt
24. Front Axle Clamp Bolt

ft	in
2.17	26
4.5	54
5.7	69
8.5	102
9.5	114
10	120
11	123
13.5	162
14.5	174
17.5	210
18	216
22	264
24	288
26	312
43	516
80	960

General Lubrication:

- Nuts & Bolts - prevent rust
- Motor Oil: Side & Center Stand
- Clutch & Break Lever
- Rear Break pedal, rod joint, & lever install)

Cable Lubricator: Clutch & Throttle cables

- Grease: Clutch cable upper end
- Throttle cable upper end
- Speedometer inner cable (sparingly & careful)

Bolt ft-lbs Nut Bolt ft-lbs Nut

VN750 Maintenance

6	4.5	10	12	40	17
8	11	12	14	61	19
10	22	14	16	94	92

VN750 Maintenance

Automobile Filters - (~ 2.5 inches long - fit Mazda RX-7 and Miata)

Bosch 3300 ~ \$5

NAPA Gold 1365 ~ \$6

Purolator L14622 ~ \$5

AC Delco PF1237 ~ \$6

STP S-02876 ~ \$3

FRAM PH6607 ~ \$3

WalMart SuperTech ST6607 ~ \$2

Automobile Filters - (~ 3.5 inches long - fit 1994 Mazda MX-3, V-6)

Mobil 1 M1-110 ~ \$10

Bosch 3323 ~ \$5

Purolator Pure One L14620 ~ \$6

NAPA Gold 1356, Carquest 85356, WIX 51356 ~ \$6

Deutsch D-370 ~ \$4

AC Delco PF-2057 ~ \$6

Motorcraft Long Life FL-821 ~ \$4

STP S-02867 ~ \$3

FRAM, Castrol, Penske 7317 ~ \$3

Battery 12V, 14AH

Yuasa YTX14AHL-BS glass mat, gel tech, maint free, 210 CCA

Westco 12V14L-B 190 CCA